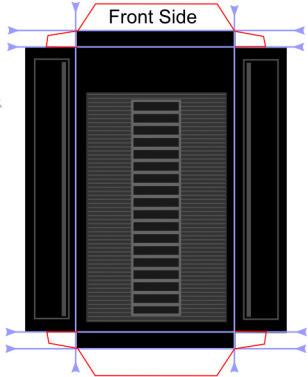
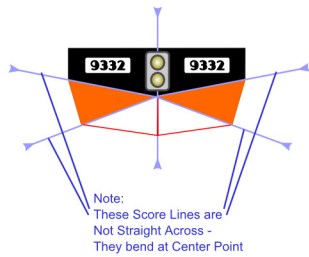
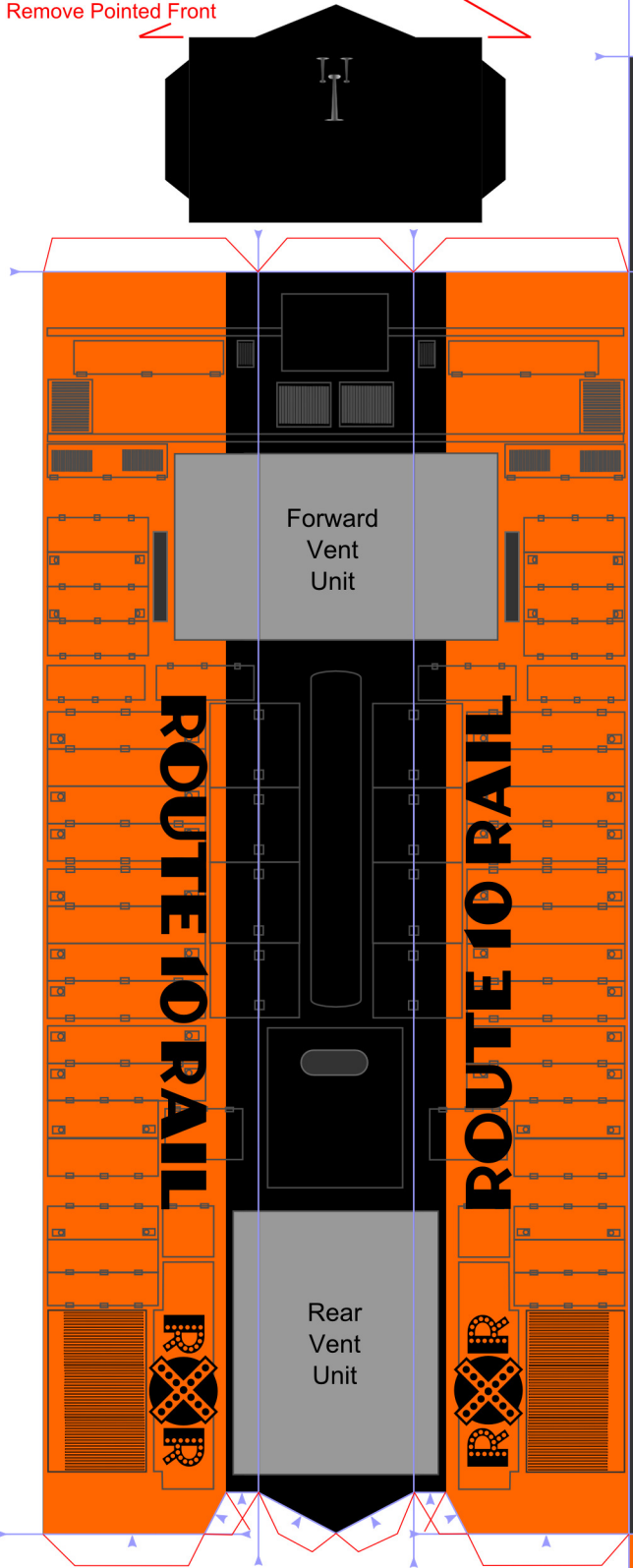
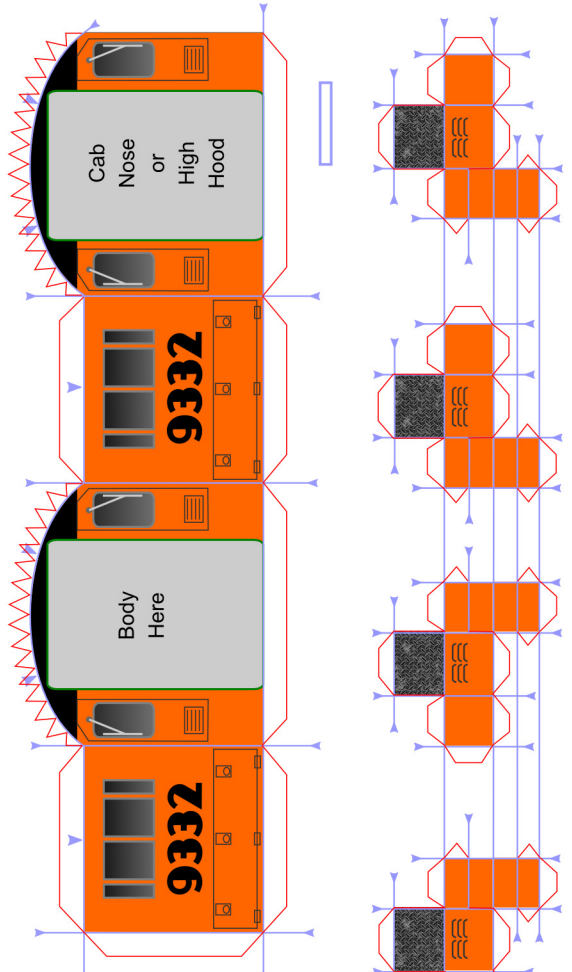
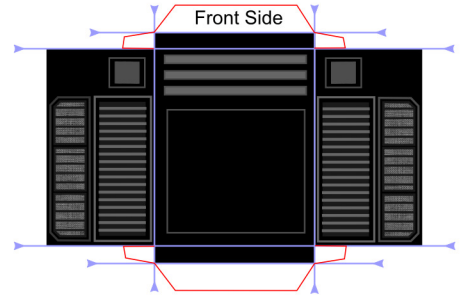
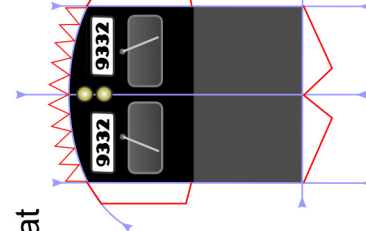
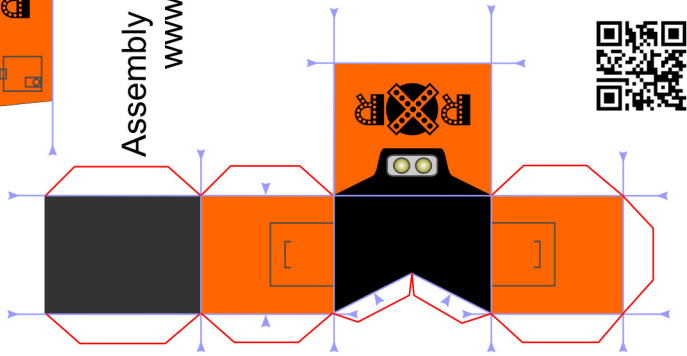


If Building High Hood Version, Cut Straight Across to Remove Pointed Front

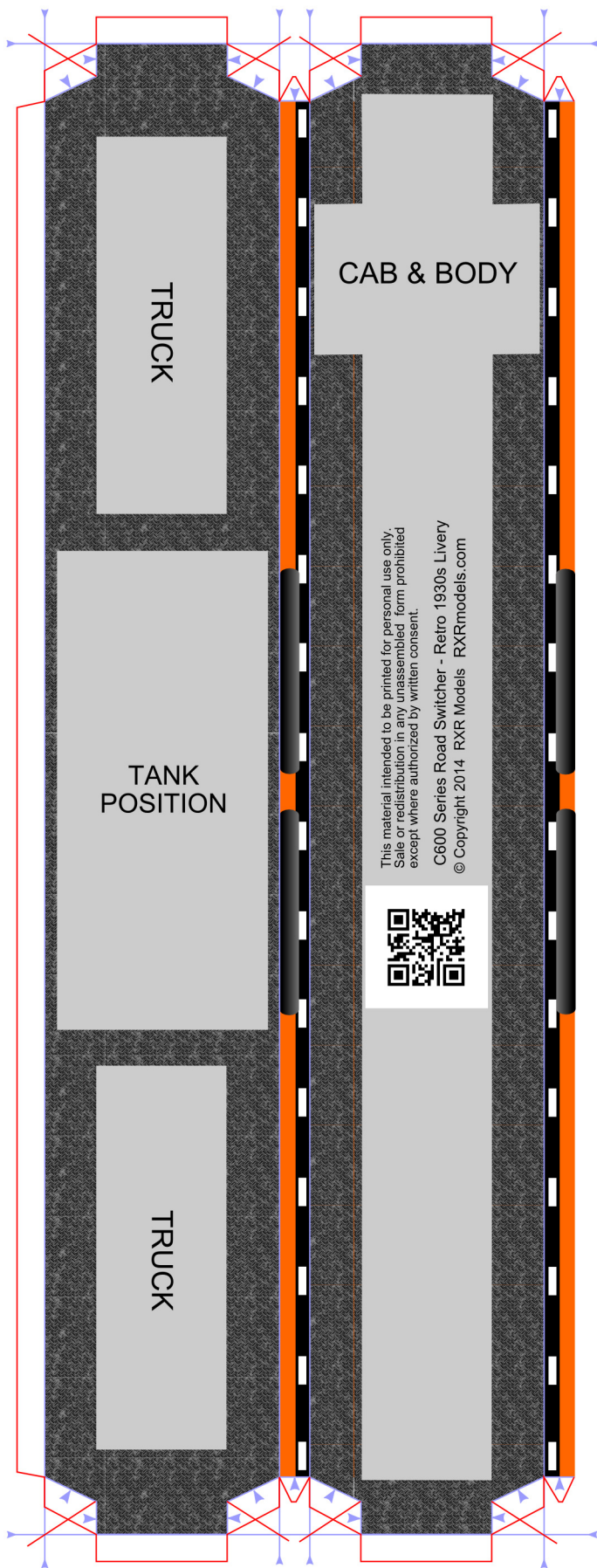


C600 Series Road Switcher - Retro 1930s Livery  
 © Copyright 2014: RXR Models RXRmodels.com  
 This material intended to be printed for personal use only.  
 Sale or redistribution in any unasssembled form prohibited  
 except where authorized by written consent.

Assembly Instructions Available at  
[www.RXRModels.com](http://www.RXRModels.com)



Cut on  
 RED lines  
 Score on  
 BLUE lines



Assembly Instructions Available at  
[www.RXRModels.com](http://www.RXRModels.com)

